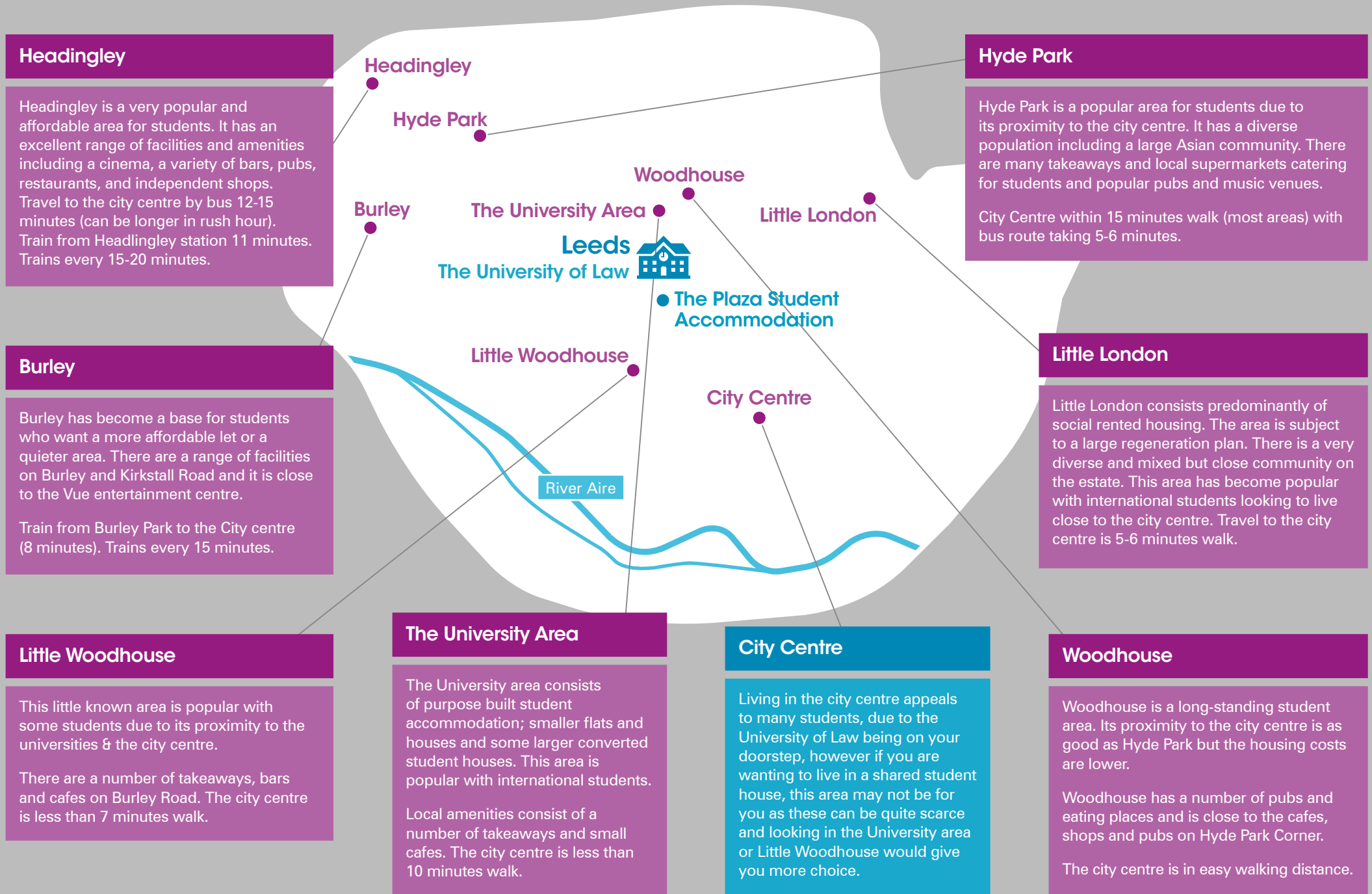


Quick guide to accommodation areas in Leeds



Headingley

Headingley is a very popular and affordable area for students. It has an excellent range of facilities and amenities including a cinema, a variety of bars, pubs, restaurants, and independent shops. Travel to the city centre by bus 12-15 minutes (can be longer in rush hour). Train from Headingley station 11 minutes. Trains every 15-20 minutes.

Hyde Park

Hyde Park is a popular area for students due to its proximity to the city centre. It has a diverse population including a large Asian community. There are many takeaways and local supermarkets catering for students and popular pubs and music venues. City Centre within 15 minutes walk (most areas) with bus route taking 5-6 minutes.

Burley

Burley has become a base for students who want a more affordable let or a quieter area. There are a range of facilities on Burley and Kirkstall Road and it is close to the Vue entertainment centre. Train from Burley Park to the City centre (8 minutes). Trains every 15 minutes.

Little London

Little London consists predominantly of social rented housing. The area is subject to a large regeneration plan. There is a very diverse and mixed but close community on the estate. This area has become popular with international students looking to live close to the city centre. Travel to the city centre is 5-6 minutes walk.

Little Woodhouse

This little known area is popular with some students due to its proximity to the universities & the city centre. There are a number of takeaways, bars and cafes on Burley Road. The city centre is less than 7 minutes walk.

The University Area

The University area consists of purpose built student accommodation; smaller flats and houses and some larger converted student houses. This area is popular with international students. Local amenities consist of a number of takeaways and small cafes. The city centre is less than 10 minutes walk.

City Centre

Living in the city centre appeals to many students, due to the University of Law being on your doorstep, however if you are wanting to live in a shared student house, this area may not be for you as these can be quite scarce and looking in the University area or Little Woodhouse would give you more choice.

Woodhouse

Woodhouse is a long-standing student area. Its proximity to the city centre is as good as Hyde Park but the housing costs are lower. Woodhouse has a number of pubs and eating places and is close to the cafes, shops and pubs on Hyde Park Corner. The city centre is in easy walking distance.